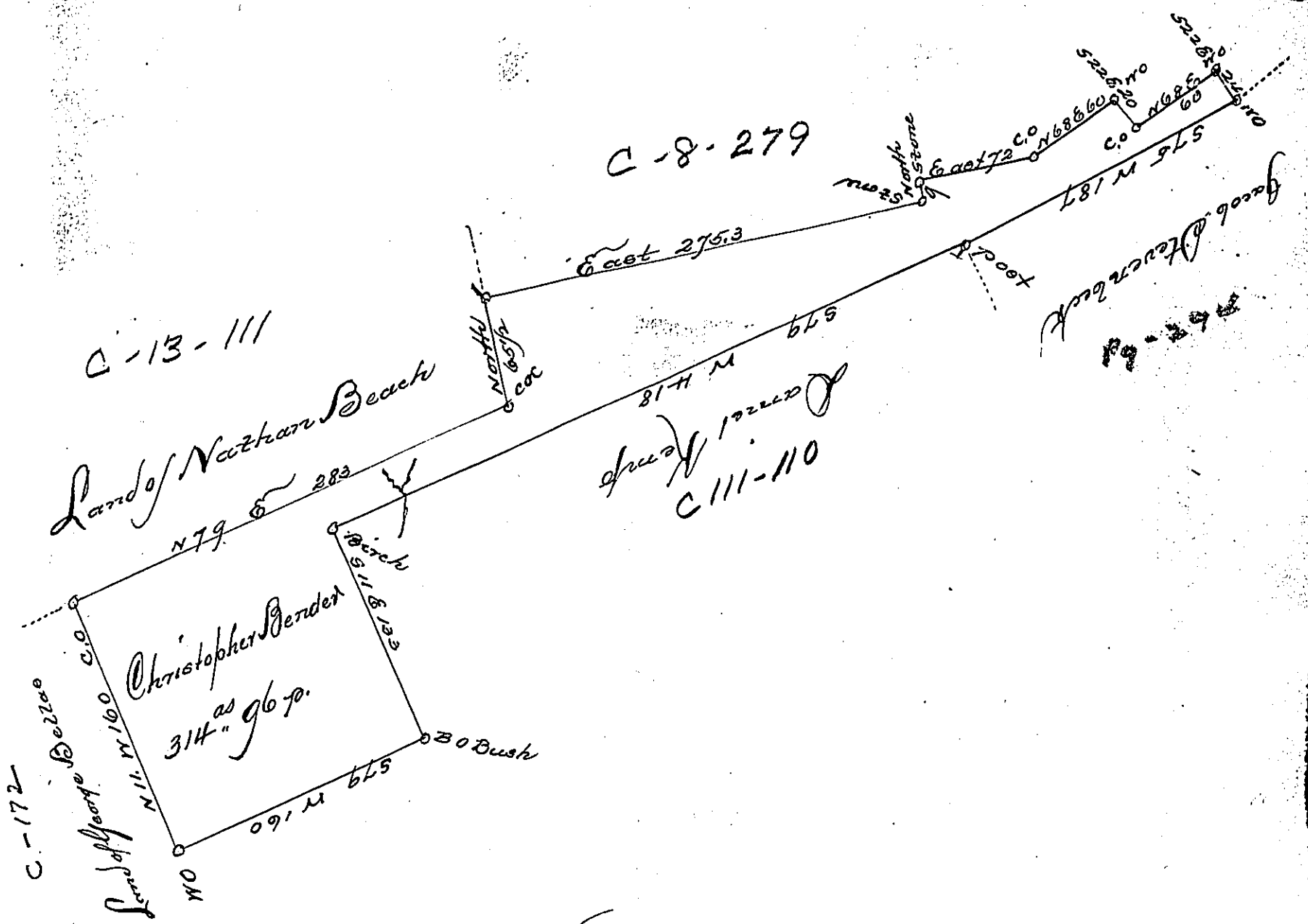


A-19-33



In pursuance of a Warrant dated the 23<sup>d</sup> of April 1794, surveyed the 15<sup>th</sup> of July 1794 unto Christopher Bender the above described tract of three hundred & fourteen acres 96 p. & more situated between the Easterly branch of Brier Creek & the South branch of Sheekshing in Selin Township, Luzerne County

By *Wm Montgomery Dy. Jr.*

To Daniel Brodhead Esq.  
Surveyor General of Pennsylvania

IN TESTIMONY that the above is a copy of the original remaining on file in the Department of Internal Affairs of Pennsylvania, made conformably to an Act of Assembly approved the 16th day of February, 1833, I have hereunto set my Hand and caused the Seal of said Department to be affixed at Harrisburg, this *first* day of *December*, 1903

*James R. Brown*  
Secretary of Internal Affairs.